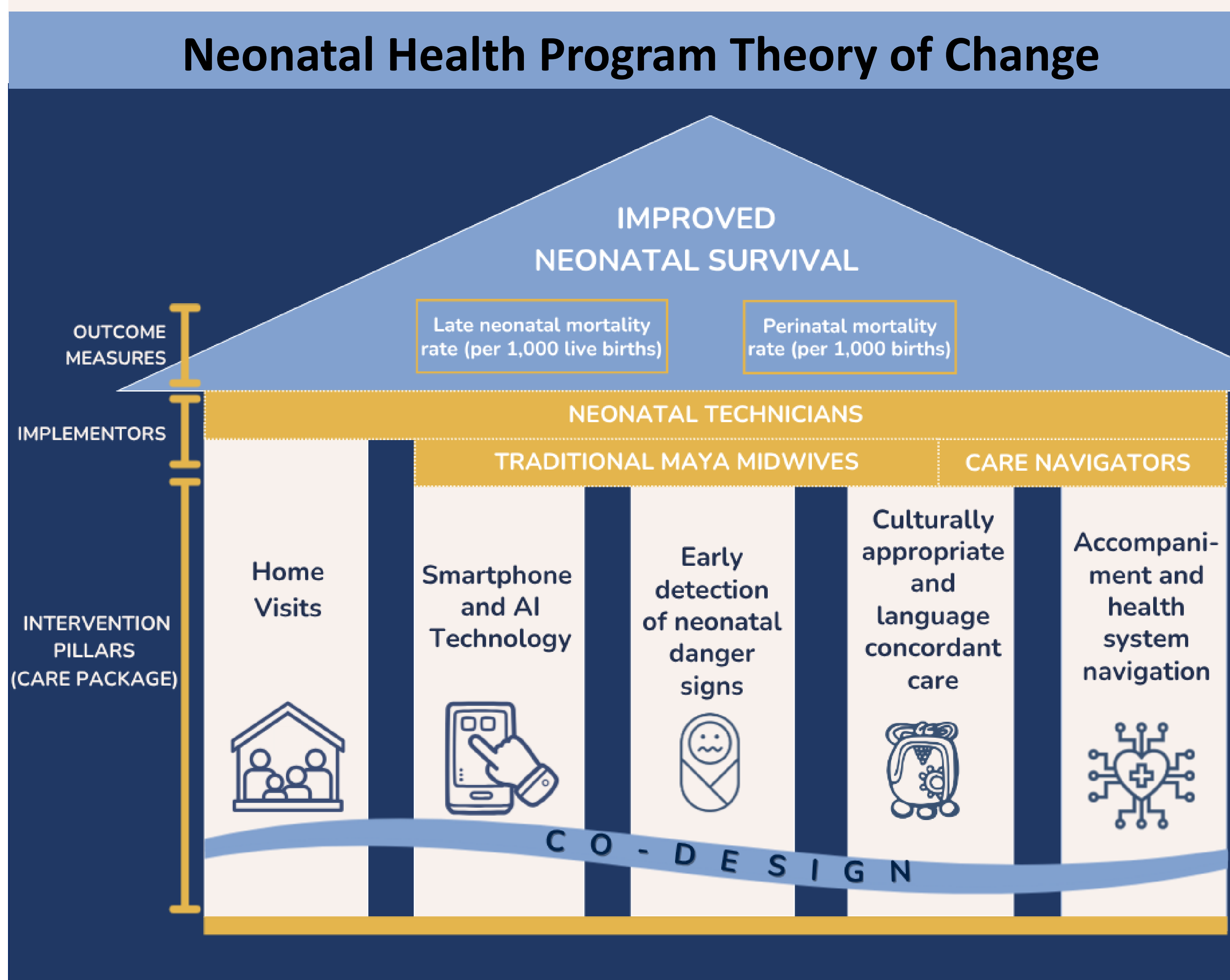


A community-based neonatal health program integrating **Indigenous Maya practices, home visits, and digital decision support** (Safe+Natal app) has improved detection of at-risk newborns and referral rates.

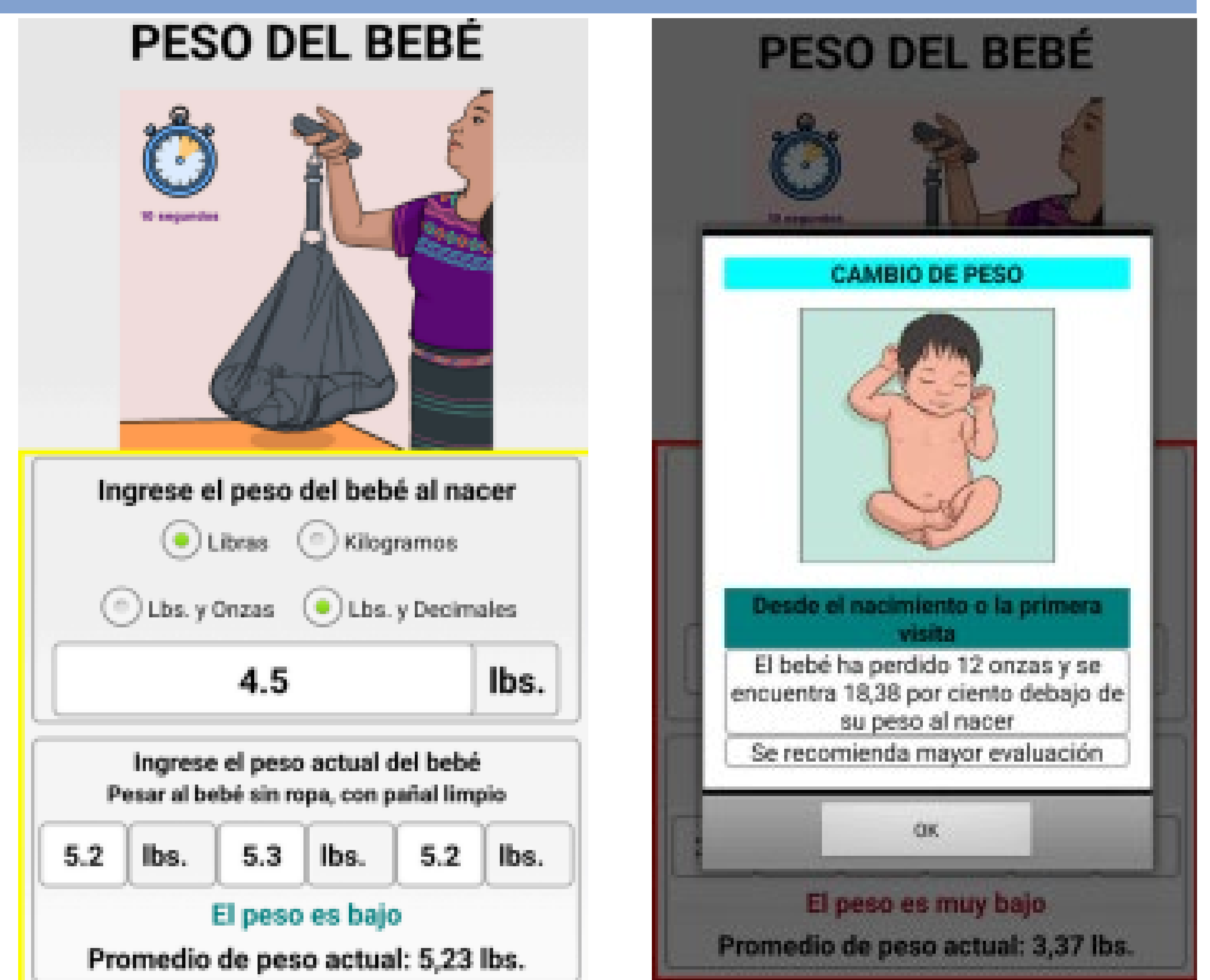
Learn more:



Background: Guatemala has one of Latin America's highest neonatal mortality rates, with rural Indigenous communities disproportionately affected. Since 2015, Maya Health Alliance has partnered with Maya midwives in Tecpán, Chimaltenango, using an mHealth toolkit called safe+natal to improve the perinatal continuum of care. **This program is expanding to community-driven neonatal interventions.**



The safe+neonatal app was co-designed with lay midwives and technicians to support timely monitoring, care, and referrals for neonates.



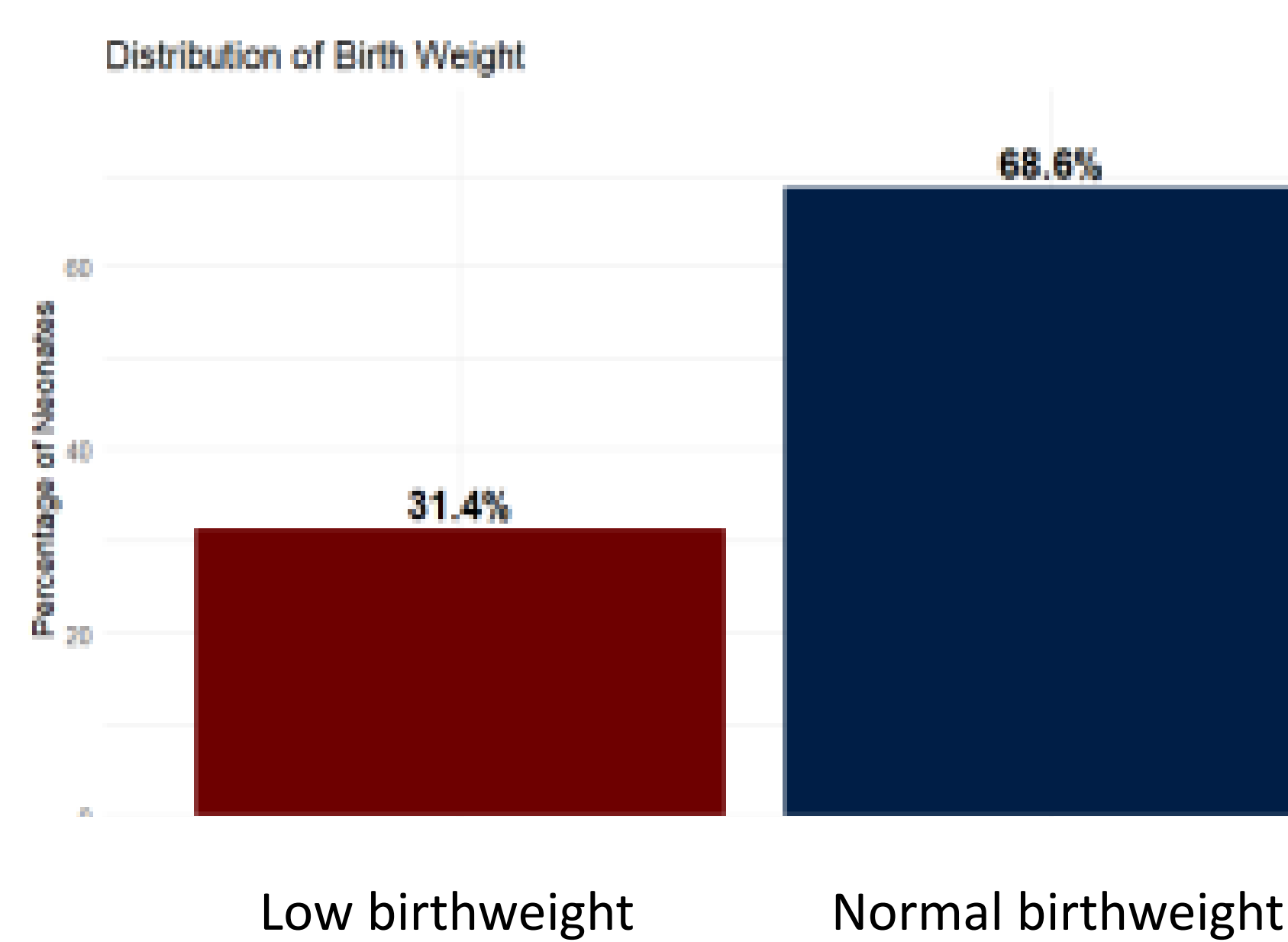
Methods & Additional Results

We use QI methods and frameworks to track progress. Since January 2024, **420+ newborns** have received 1-3 home visits, and neonatal referrals have increased by over 100%. We have reached **85%** of the newborns reported monthly. Successful referral rates are 67% for routine and 9% for emergency.

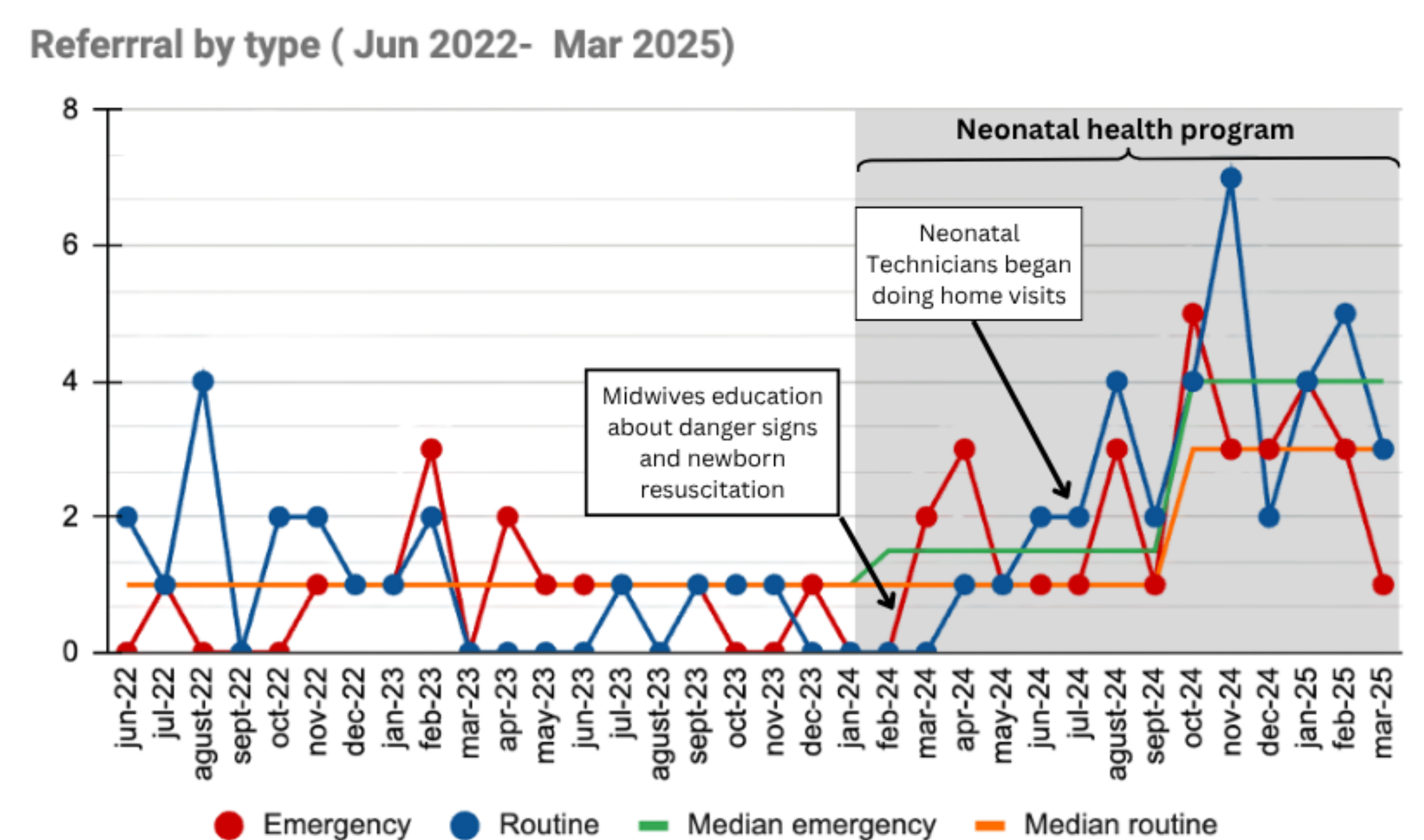
Neonatal technicians visit babies and support caregivers in the first 4 weeks.



Low birthweight (31.4%) is the most common reason for referral.



Neonatal referrals have increased, by over 100%



Challenges: 1) Caregivers' resistance to hospital referrals given fear of economic burdens, discrimination, or mother/baby separation; 2) Saturation of hospital services; 3) Insufficient or inadequate follow-up services; 4) Technology issues (signal, digital scales, etc.); 5) Limited human resources to reach all newborns.