

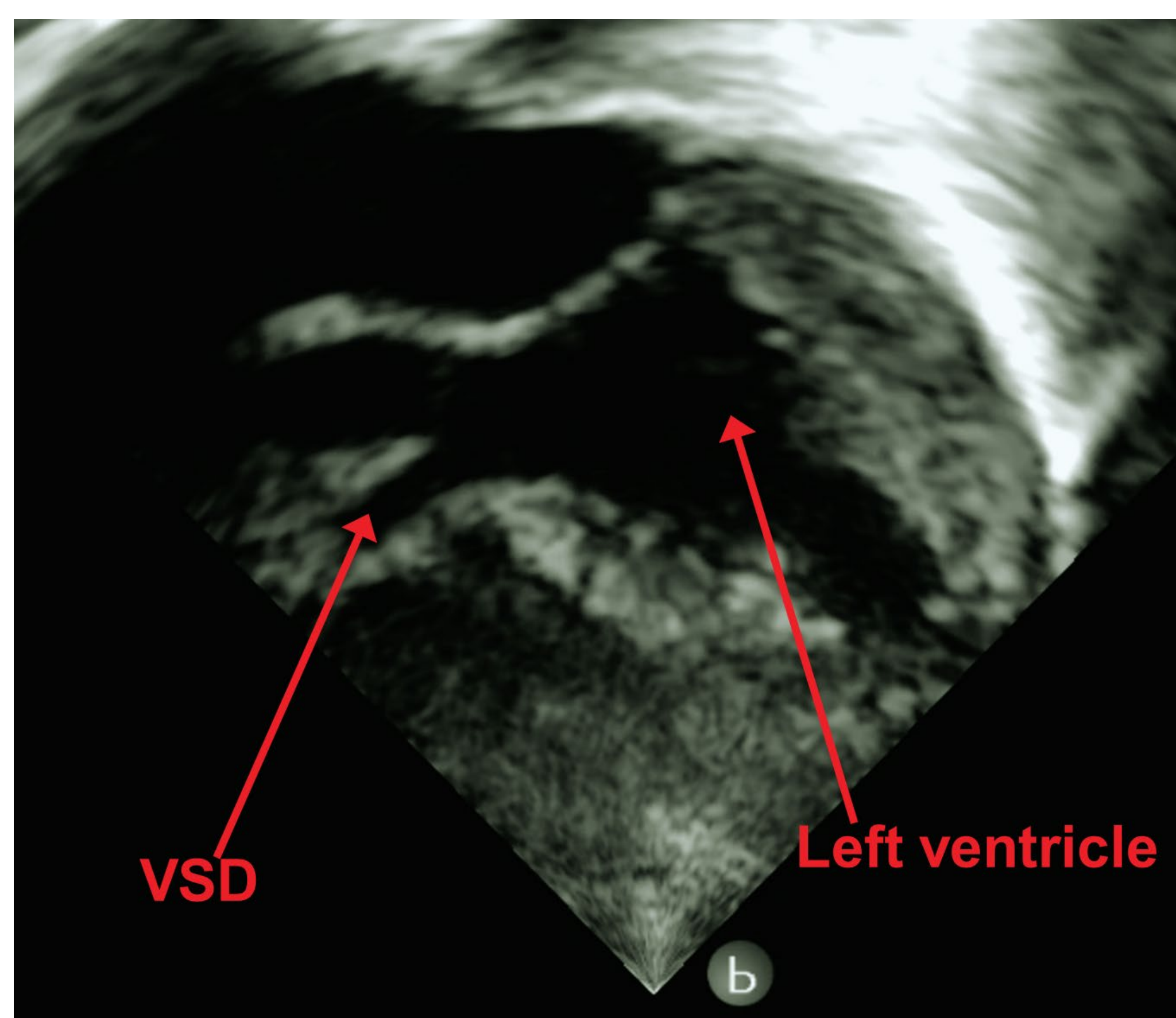
Portable ultrasound is a valuable tool to diagnose congenital heart disease

Congenital Heart Disease in Goyalmara Mother and Child's Hospital: Two Case Reports

Background: Congenital heart disease (CHD) is a significant cause of paediatric mortality particularly in low-resource settings. Point-of-Care Ultrasound (POCUS) was used to diagnose CHD at The Goyalmara Mother And Child Hospital (GMCH), enabling targeted management.

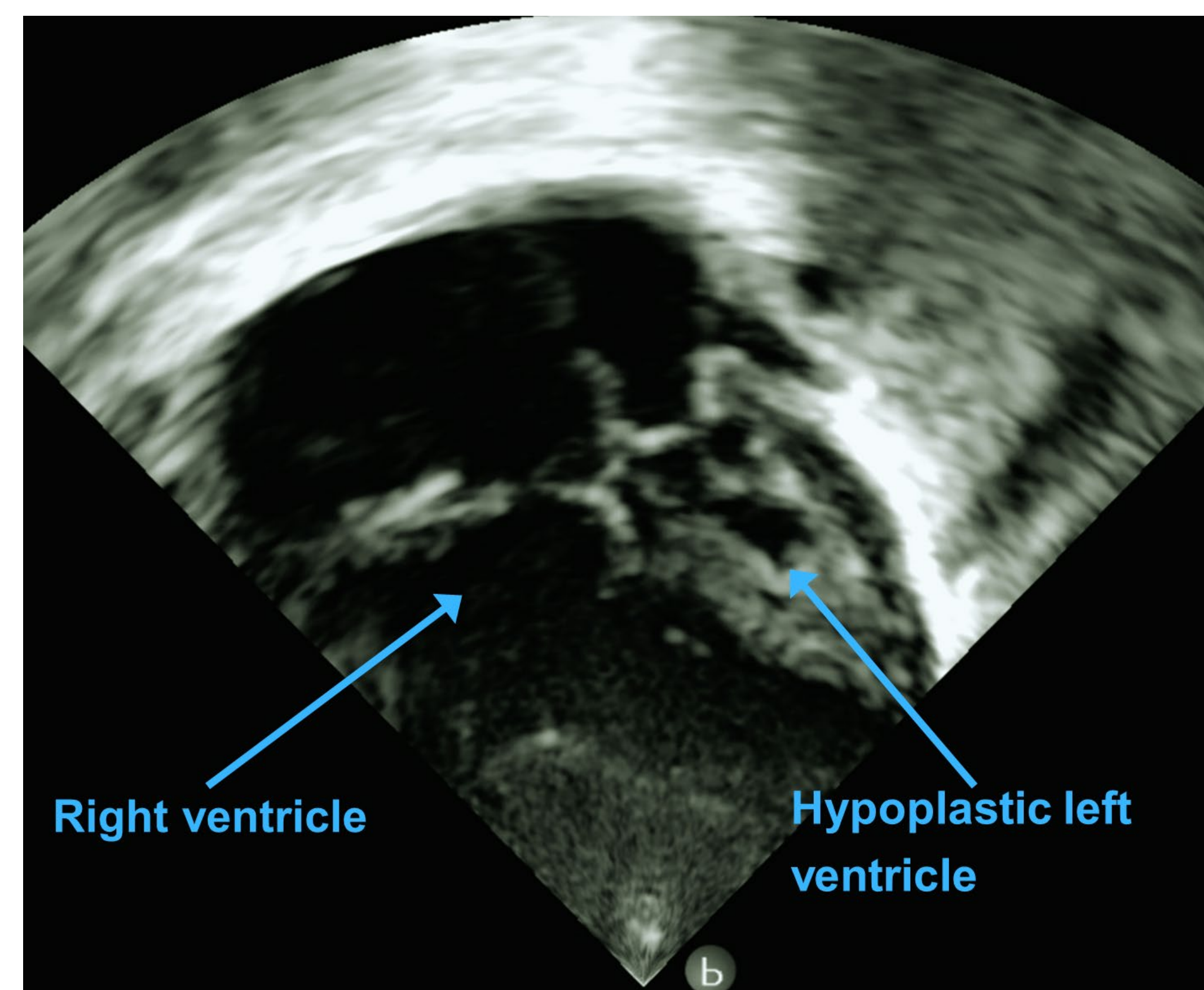
GMCH provides paediatric care to over 1.2 million Rohingya refugees and the surrounding local population.

Case 1: Ventricular-Septal Defect (VSD)



A 7-month infant presented with recurrent respiratory tract infections and failure to thrive. The infant had a pan-systolic murmur and bilateral crepitations. POCUS demonstrated a large VSD. Accordingly, diuresis was commenced and follow-up was arranged to monitor progress of the VSD.

Case 2: Hypoplastic Left Heart Syndrome (HLHS)



A newborn was admitted with presumed early-onset neonatal sepsis in the context of hypothermia and meconium-stained liquor. At day 3 of life, the neonate developed a soft systolic murmur and increased work of breathing. POCUS demonstrated HLHS. Accordingly, treatment shifted to symptomatic relief and appropriate palliative care.

Discussion

CHD is difficult to clinically diagnose and often presents concurrently with infection. POCUS, with specialist Telemedicine review, is a practical tool to identify CHD in humanitarian settings. This facilitates tailored care.

Case One demonstrates how a diagnosis of CHD allows more informed decision-making and patient prognostication.

Case Two highlights that POCUS can support patient-centred palliative care in complex CHD.

Limitations: POCUS requires substantial training and relies on expedient Telemedicine reviews.