



# Neonatal jaundice in Malawi

## How often does it occur?

## What are the causes?

### Prevalence and causes of neonatal jaundice in Queen Elizabeth Central Hospital, Malawi

#### Background

Neonatal jaundice is common with potentially severe adverse outcomes

There are many potential causes for neonatal jaundice, but in our setting, the exact cause is often not identified

Over 60% of all newborns develop jaundice

- Although most often mild and benign
- If severe, can lead to **severe handicaps** and **even death**
- **Complications more common in LMIC**

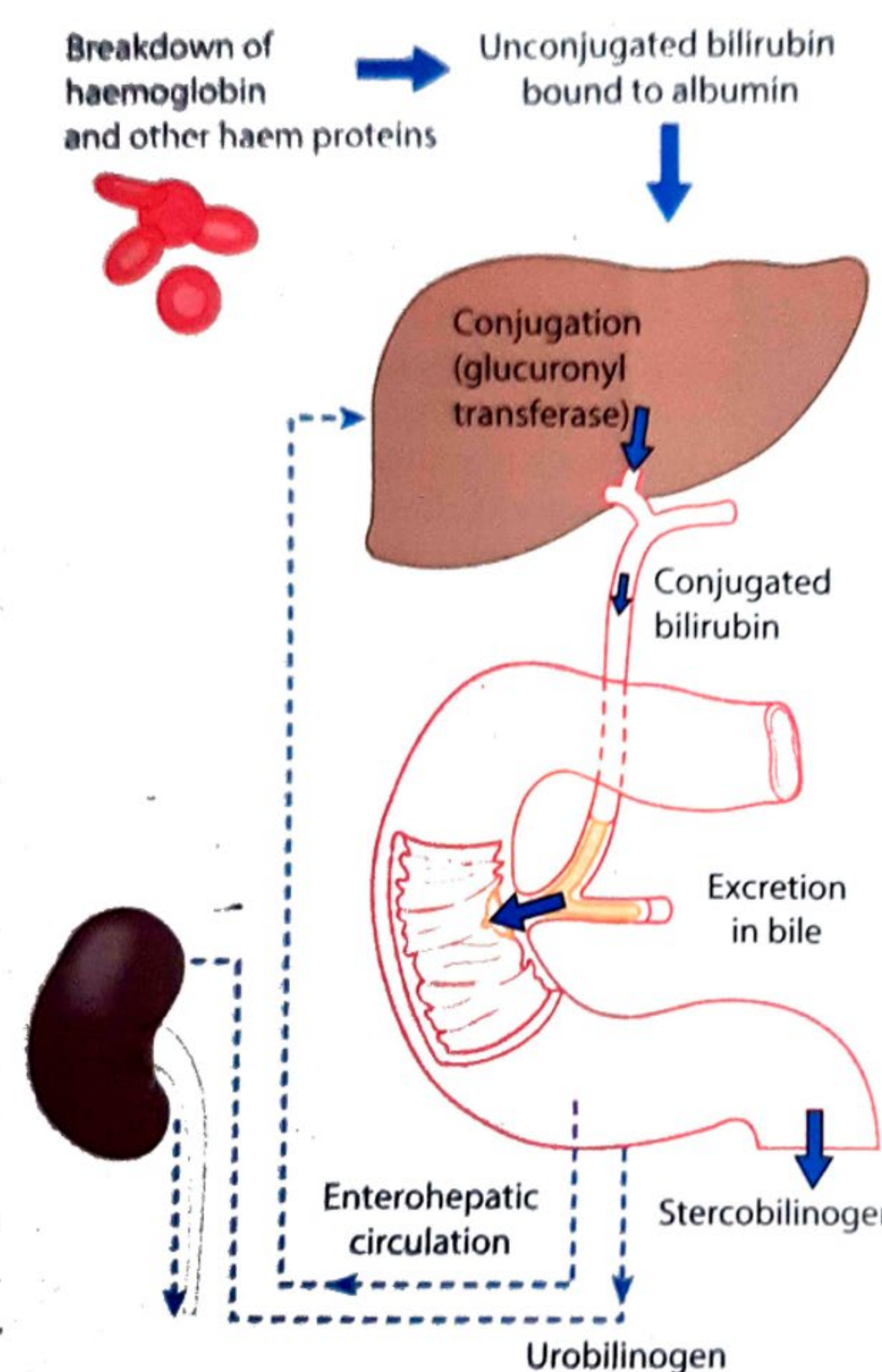
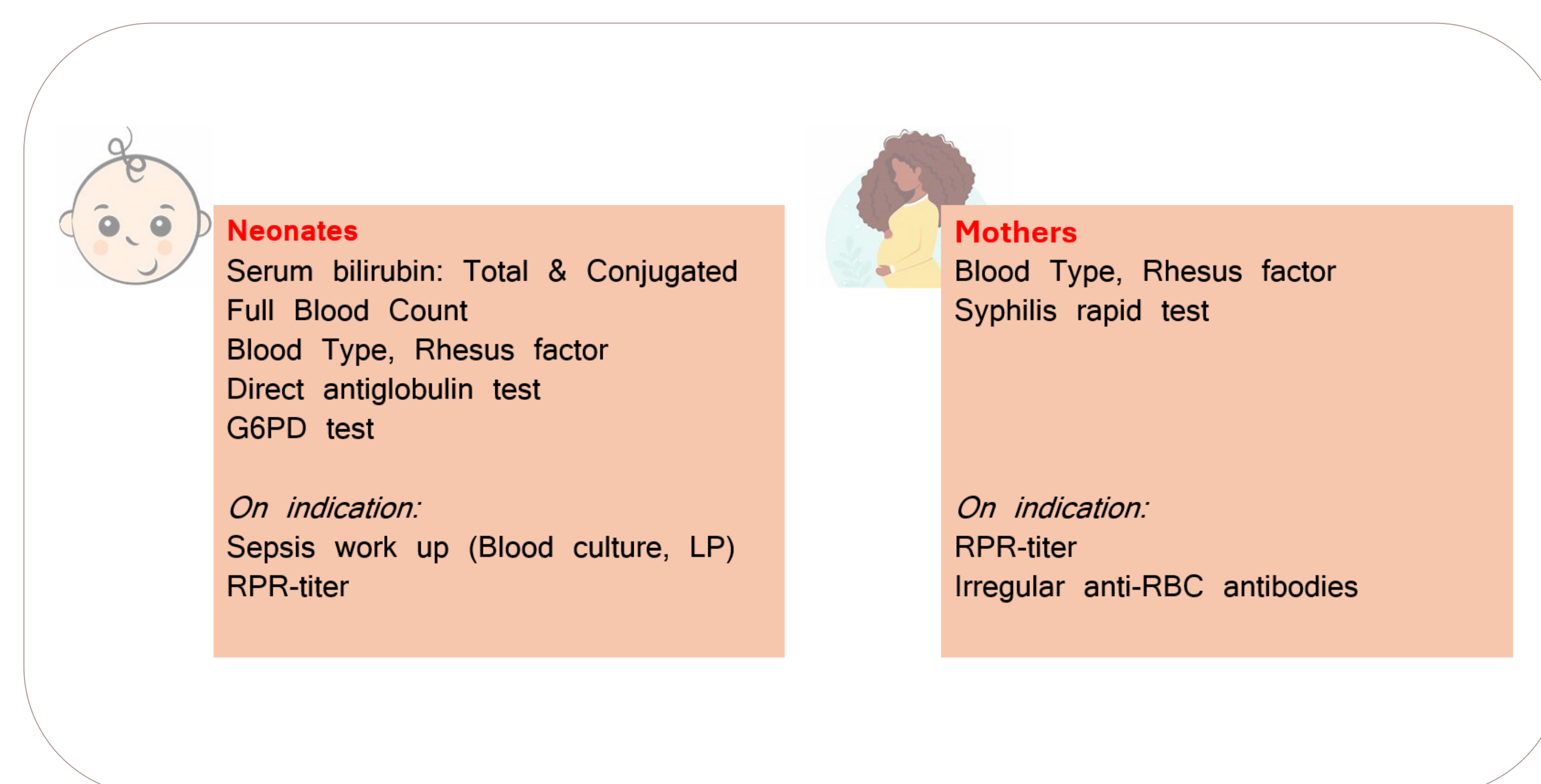
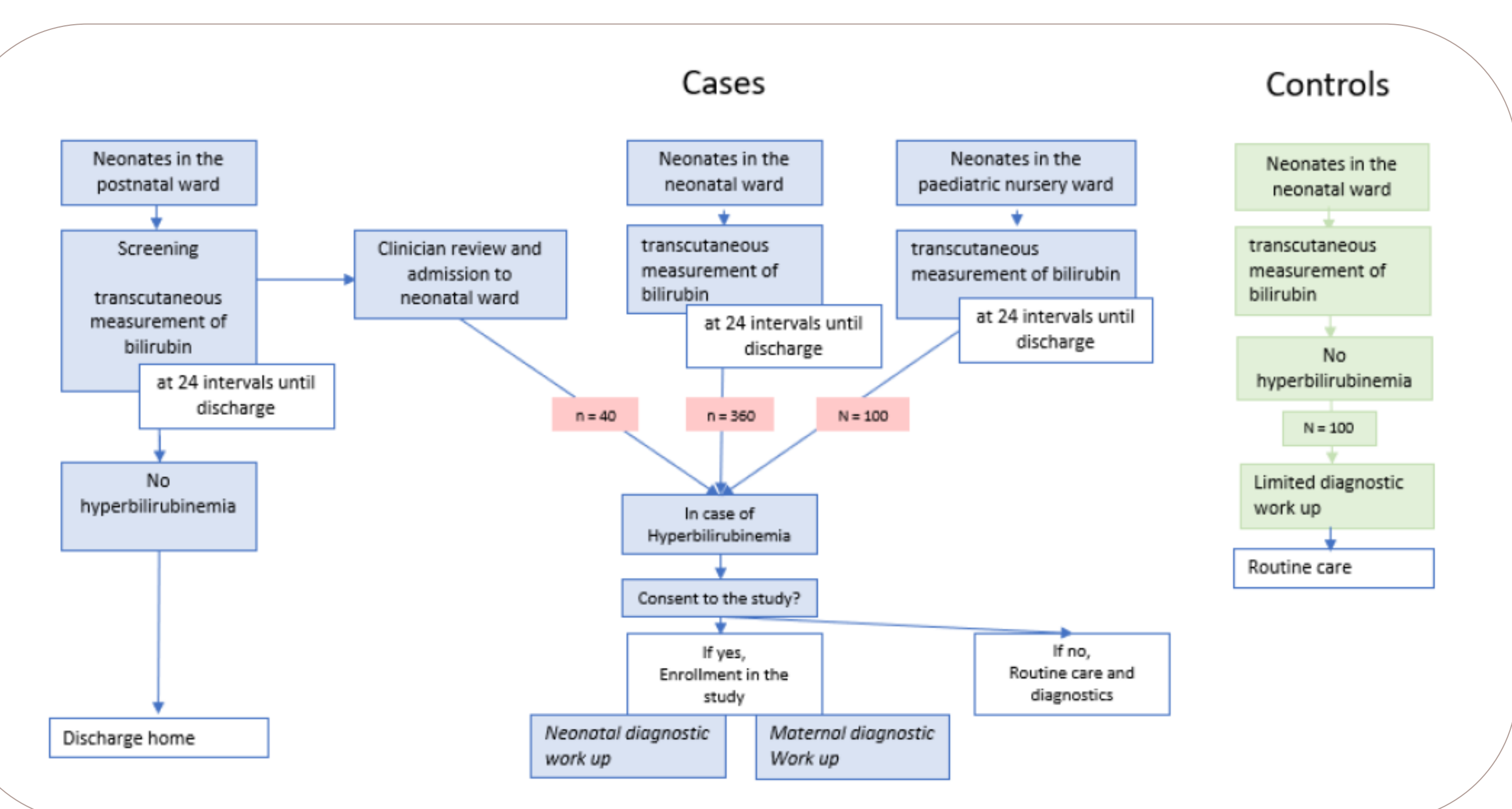
#### Objectives

- **Prevalence** of jaundice among neonates
- **Contribution of Haemolytic Disease of the Foetus and Newborn**
- **Contribution of other aetiologies** of neonatal jaundice

#### Study design

##### Schematic overview of the study

##### Diagnostic procedures



**Unjugated**  
Haemolysis  
G6PD-deficiency,  
ABO incompatibility,  
Rhesus disease,  
Other haemolytic conditions

**Conjugated**  
Intra-hepatic  
Infections (STORCH)  
Metabolic  
Drugs

Extra-hepatic  
Biliary atresia  
Choledochal cysts  
Other

**Presumed common causes**  
Sepsis  
Prematurity  
Asphyxia

#### About AFRICARhE

The AFRICARhE project, *African Initiative to Eradicate Rh disease*, undertakes robust research and co-creates context-specific HDFN screening, prevention and management programs. Currently, there are three study sites: in Malawi, Ethiopia and Tanzania.

**Scientific Survey:**  
How is Rh Disease managed in your African country?  
*Your experience counts!*



Peter Moons, Gari Makonyola, Tienke Vermeiden, Abera Kenay Tura, Jeremia Pyuza, Joanne Verweij, Kondwani Kawaza, on behalf of the AFRICARhE consortium

